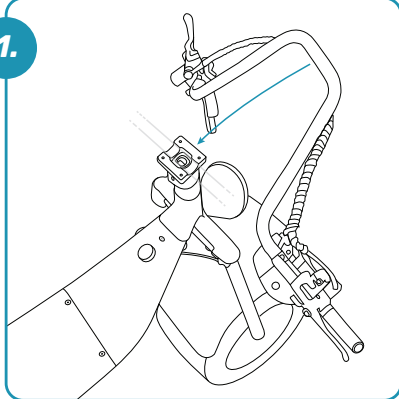


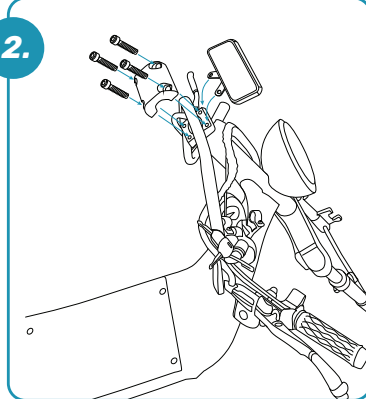
1.



Handlebars

Place handlebar on bottom bracket notch.

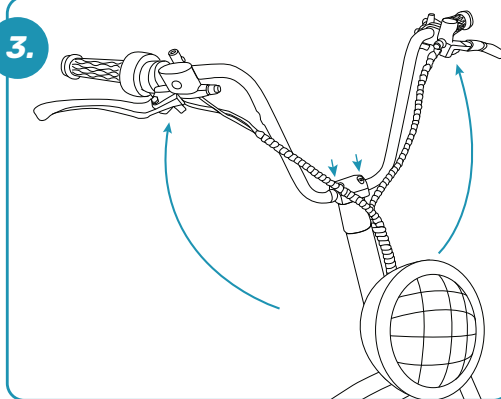
2.



LED Display

Align the LED display mount holes with the front bracket mount holes.
Attach loosely with 4 screws.

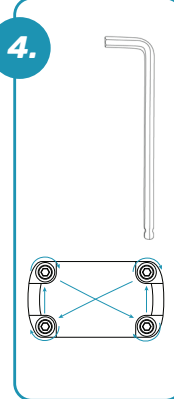
3.



Adjust Handlebars to Desired Position

Find center and correct height. Hold in place while screws are tightened.

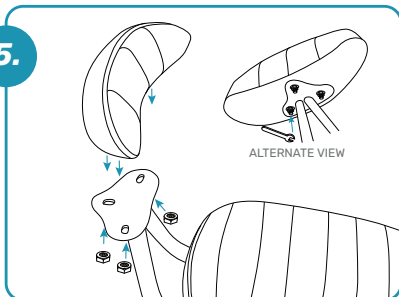
4.



Tighten

Tighten the 4 screws with the Allen wrench in a Figure-8 pattern.

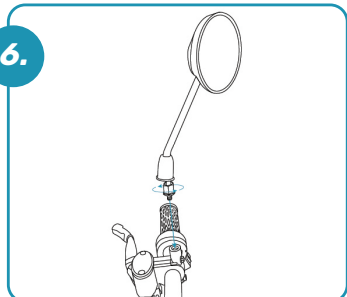
5.



Rear Seat

Place seat on rear support bracket.
Hold in place, fastening each of the 3 nuts until tight.

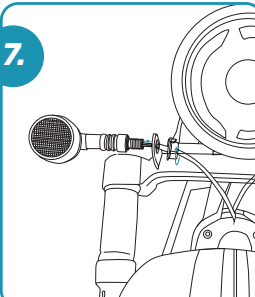
6.



Side Mirrors

Place mirror into threaded hole on handlebar and turn clockwise until tight. Use the small wrench to secure tightly in place.

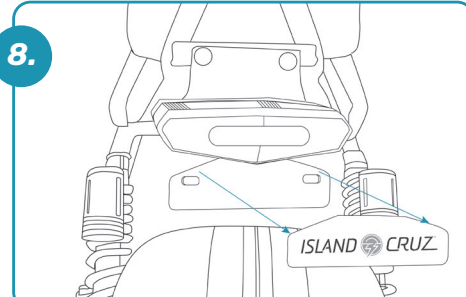
7.



Blinkers

Slide blinker through the metal bracket and tighten with provided blinker nut. (x2)

8.



License Plate Badge

Remove badge when license plate is needed.